



Advin Systems Inc.

556 Weddell Drive, #8, Sunnyvale, CA 94089, USA.
Phone: 408-243-7000 Fax: 408-541-9006

www.Advin.com
Sales.Advin@gmail.com

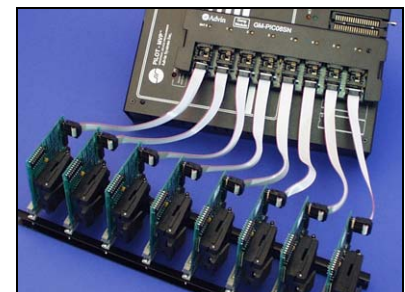
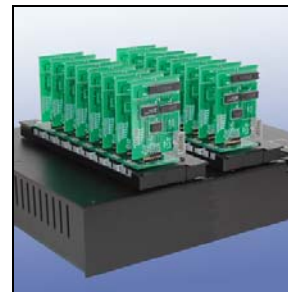
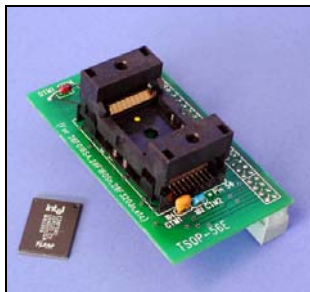


Shown with Optional UPA-84

PILOT-U128-Plus

Advanced 128-Pin Universal Device Programmer

- **Proven Industrial Quality, Durable**
- **Industry's Most Universal & Flexible Programmer**
- **ESD Shielding Metal Chassis**
- **Hefty Pin Drivers**
- **Free Lifetime S/W Updates via WEB**
- **True Low Voltage Support to 1.5v**
- **Gang Expandable**
- **Reliable In-Circuit Programming Signals**
- **CE Certified**



Expanding Possibilities - Please see www.Advin.com for a complete list of adapters and gang modules.

UNIVERSAL AND FLEXIBLE

- One unit supports all types of programmable devices: FLASH, EPROMs, EEPROMs, Microchip PICs, 87XX and 89XX series micros, parallel PROMs, serial PROMs (24xx, 25xx, 93xx, 17xx, EPC1), PALs, GALs, EPLDs, CPLDs, etc.
- True low voltage support down to 1.5 volts.
- Software controlled from desktops or laptop PCs. Easy new device updates via software from web.
- Pins are controlled by programmable software pin drivers.
- No adapters are necessary for programming DIP packages including EPROMs, micros, PICs, PALs, CPLDs, etc. Adapters are needed only for non-DIP packages.
- A wide variety of packages such as PLCC, LCC, TSOP, PSOP, SOIC, QFP, TQFP, QFN, LAP and uBGA are optionally supported by adapters available from Advin.
- Has 128 pin-drivers, enough to support 128-pin devices with universal adapters.

FUNCTIONAL AND FRIENDLY SOFTWARE

- PC Software included. Easy to learn and fast to operate.
- Compatible with Windows XP/NT/2000/ME/98.
- FREE software updates available over the web.
- Accepts various file formats including Intel HEX, Intel Extended Hex, Motorola S-records, POF, ASCII and binary.
- Virtual memory feature: makes use of RAM and disk space on your PC. No RAM expansion modules needed, even for large devices.
- File Load operation supports automatic splits (1 to 2, 1 to 4, 1 to 8) for both byte-wide and word-wide memories.
- Functions provided include: read, program, verify, sector protect, edit, checksum, file offset, buffer offset, partial address programming, ASCII buffer edit, etc.
- Release control features: automatically generates serial numbers, checksums, and date/time stamping information for memory devices.

HEFTY, STRONG PIN DRIVERS

- Programmer provides solid signals even when programming high power chips.
- Supports in-circuit programming of large customer boards without requiring customer to use external power supplies.

SOLID, DURABLE HARDWARE

- Metal chassis construction: shields programmer from potentially damaging external static charges.
- Strong pin drivers means programmer is not over-burdened and therefore give programmer a much longer life than other programmers using weak pin-drivers.
- All sockets used have gold-plated contacts and are the best quality in the industry.

FRIENDLY HARDWARE FEATURES

- Reverse-device insertion-check warns operator of accidental reverse placement of devices. Continuity-check warns operator of misplaced device or broken device pins.
- Built-in power supply provides adequate and isolated power for programmer, avoids power deficiency problems common in smaller programmers which use power adapters.
- Universal power supply automatically accepts input voltages from 85v AC to 264v AC.

DEPENDABLE BRAND, REPUTABLE COMPANY

- PILOT programmers are like Maytag washing machines. It is not the biggest brand, but certainly is the most reliable and lasts the longest.
- Advin Systems Inc. has been manufacturing quality programming instruments for America's electronics, defense, machinery and security industry for over 20 years.
- Made in Silicon Valley, California, USA.

GANG EXPANDABLE

- Expandable to do 8-gang or 16-gang with optional Gang Modules.

UNIQUE PIC MICRO IN-CIRCUIT PROGRAMMING

- Our in-circuit programming functions are intelligently controlled by S/W, not just a "wire-it-yourself" adaptation.

UNIQUE SET-PROGRAMMING FUNCTION

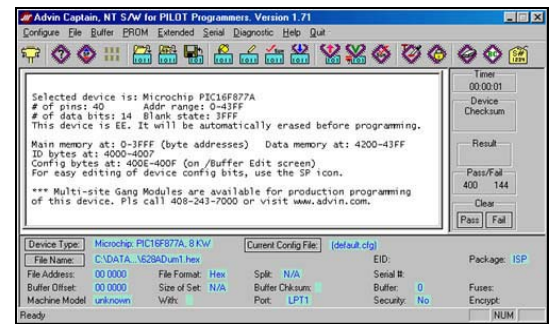
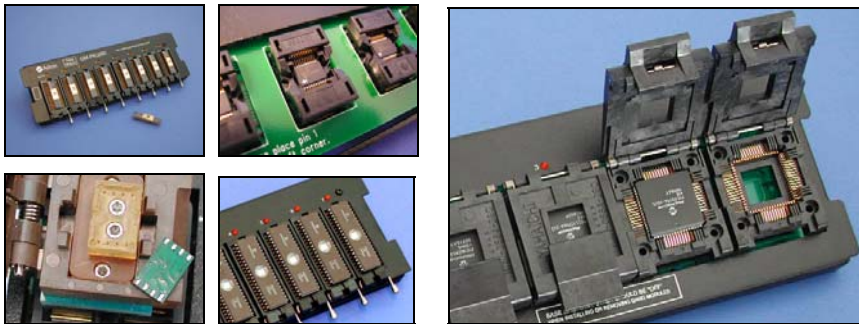
- Capable of programming 8 memory devices with different data, all from one FILE LOAD operation.

GUARANTEE, WARRANTY AND SUPPORT

- 30-day unconditional money-back satisfaction guarantee.
- 1 year hardware warranty, including parts and labor.
- Factory-direct technical support.

Expandable Hardware (Please see www.Advin.com for a complete list)

User Friendly Software



SPECIFICATIONS

Pin Drivers

48 pin drivers. Each pin is software programmable to generate either digital or analog voltages.

Minimum slew rate: .001V/us; Maximum slew rate: 1000V/us.

Range: 0 to 25.5V in 100mV increments. Current limited.

Programming socket: One 44-pin gold ZIF, accepts .3-.6" DIPs.

Device sizes supported

On standard equipment: up to 44 pins DIP

With universal modules: up to 128 pins.

With family or specific modules: up to 304 pins.

Functional testing: up to 128 pins

For complete details, please see Supported Devices List.

Low Voltage Capability:

All Vcc levels are supported, including 6.5v, 5v and as low as 1.5v.

Device Package Expandability:

Supports many device packages with optional modules or adapters: PLCC, LCC, TSOP, PSOP, SSOP, SOIC, QFP, TQFP, QFN, uBGA, PGA, LAP, QFN, etc.

Gang Expandability:

Expandable to do Gang/Set programming of EPROMs, Flash, Serial PROMs, PIC micros, and 87xx/89xx micros with the Gang Modules.

Examples of available operations:

Device Program	File Format	Configure Device	Buffer Checksum
Device Erase	File Load/Save	Configure Width	Buffer Edit
Device Secure	File Address	Configure Set-size	Buffer Fill
Device Chksum	Active Range	Configure Security	Buffer Offset
Device Verify	Sector Protect/Un-protect	Even/odd byte swap	
Device Blank-Check	Serial # Enter	Serial # Increment	

File Formats Supported: ASCII, Binary, Intel HEX, Extended Hex, Motorola S1, S2, S3, JEDEC, POF, etc.

System Requirements

PC with Windows XP/NT/2000/ME/98.

Hard disk with at least 3 MB free space. One parallel printer port.

Electrical and Physical

Operating voltage: _____ 85v to 264V, automatically switched

Power consumption: _____ 40W. Power connector: _____ Std IEC

Instrument weight: _____ 8 lbs. Shipping Weight: _____ 16 lbs.

Connector for Add-on Modules: _____ Three 50-pin expansion ports

Dimensions: _____ 11"x12.5"x3" high.

Supplied Equipment

Programming hardware, control software, user manual, interface cable to PC parallel printer port, detachable power cord.

Warranties And Software Updates

1 year hardware warranty. Free lifetime software updates via WEB.